



# PACIFIC CORRUGATED PIPE CO. D.B.A. ARIZONA CULVERT CO.

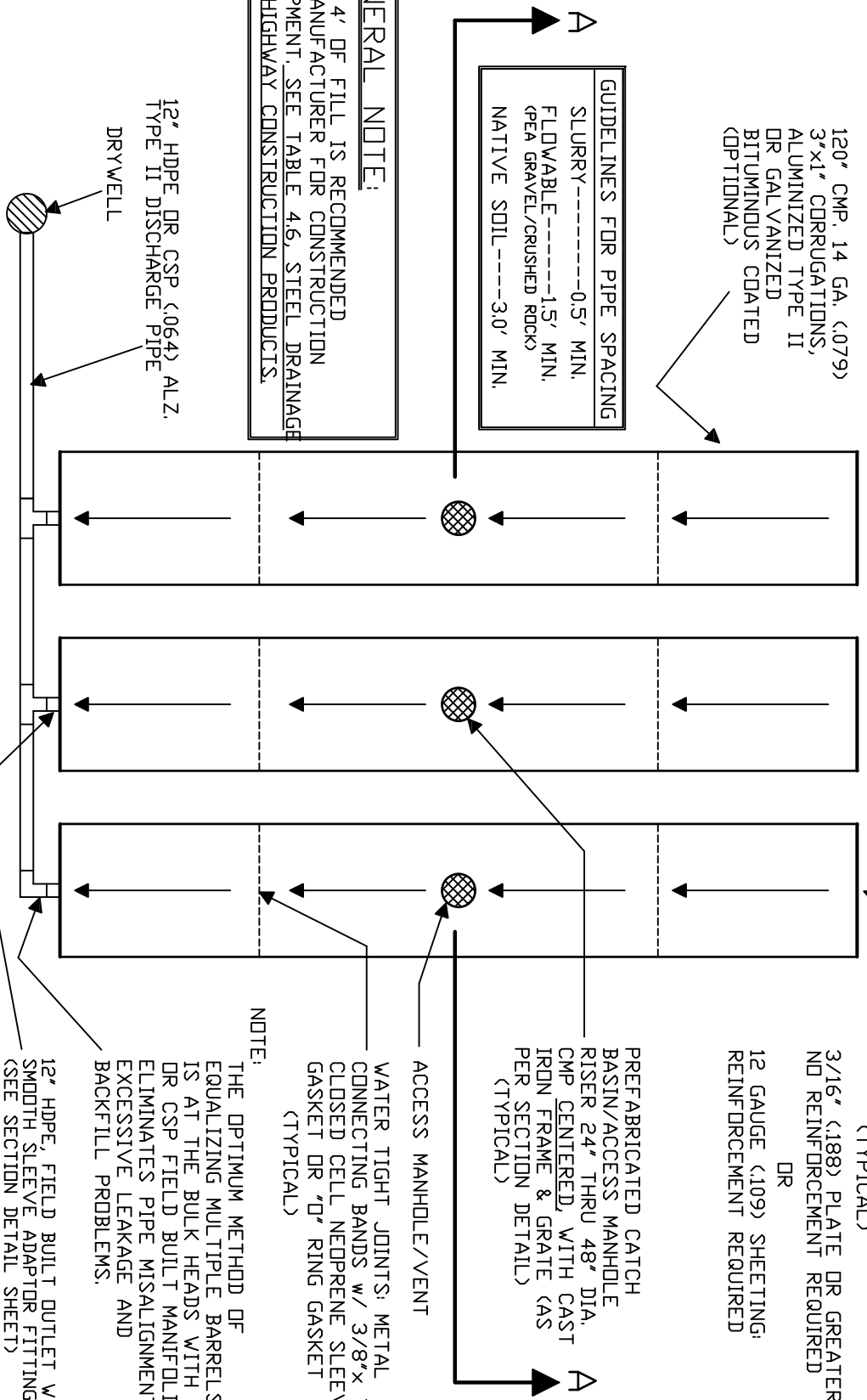
CASA GRANDE, AZ (520) 426-6000 DR (800) 822-1770 SANTA FE, NM (505) 474-5400  
**CORRUGATED PIPE DETENTION SYSTEM**  
 (MULTIPLE BARREL)

REVISION: 06/10/2008

NOTE: TO MEET FOLLOWING SPECIFICATIONS  
 AASHTO M-36 (MANUFACTURING PROCESS)  
 AASHTO M-274 (ALUMINIZED)

120' CMP, 14 GA. (079)  
 3"x1" CORRUGATIONS,  
 ALUMINIZED TYPE II  
 DR GALVANIZED  
 BITUMINOUS COATED  
 (OPTIONAL)

**GUIDELINES FOR PIPE SPACING**  
 SLURRY-----0.5' MIN.  
 FLOWABLE-----1.5' MIN.  
 (PEA GRAVEL/CRUSHED ROCK)  
 NATIVE SOIL-----3.0' MIN.



FULL WELD END CAP  
 (TYPICAL)

3/16" (.188) PLATE DR GREATER;  
 NO REINFORCEMENT REQUIRED  
 DR  
 12 GAUGE (.109) SHEETING;  
 REINFORCEMENT REQUIRED

PREFABRICATED CATCH  
 BASIN/ACCESS MANHOLE  
 RISER 24" THRU 48" DIA.  
 CMP CENTERED, WITH CAST  
 IRON FRAME & GRATE (AS  
 PER SECTION DETAIL)  
 (TYPICAL)

ACCESS MANHOLE/VENT  
 WATER TIGHT JOINTS: METAL  
 CONNECTING BANDS W/ 3/8"x 7"  
 CLOSED CELL NEOPRENE SLEEVE  
 GASKET DR "D" RING GASKET  
 (TYPICAL)

NOTE:  
 THE OPTIMUM METHOD OF  
 EQUALIZING MULTIPLE BARRELS  
 IS AT THE BULK HEADS WITH A HDPE  
 DR CSP FIELD BUILT MANIFOLD. THIS  
 ELIMINATES PIPE MISALIGNMENTS,  
 EXCESSIVE LEAKAGE AND  
 BACKFILL PROBLEMS.

**GENERAL NOTE:**

3' - 4' OF FILL IS RECOMMENDED  
 BY MANUFACTURER FOR CONSTRUCTION  
 EQUIPMENT. SEE TABLE 4.6, STEEL DRAINAGE  
 AND HIGHWAY CONSTRUCTION PRODUCTS.

12" HDPE DR CSP (064) ALZ.  
 TYPE II DISCHARGE PIPE  
 DRYWELL

THE INFORMATION PRESENTED SHOULD BE CHECKED BY THE PROFESSIONAL ENGINEER RESPONSIBLE FOR THE DESIGN TO VERIFY ACCURACY. ALSO, THE  
 FOR THE PRODUCT DESIGNED.

12" HDPE, FIELD BUILT OUTLET W/  
 SMOOTH SLEEVE ADAPTOR FITTING.  
 (SEE SECTION DETAIL SHEET)  
 AASHTO M-252 & M-294  
 ( DR )  
 12" CSP (064) 2-2/3" X 1/2" CORRUGATION, ALUMINIZED  
 TYPE II, FIELD BUILT OUTLET W/ FITTINGS. AASHTO M-274  
 N.T.S.