



PACIFIC CORRUGATED PIPE CO.
D.B.A. ARIZONA CULVERT CO.

CASA GRANDE, AZ (520) 426-6000 DR (800) 822-1770 SANTA FE, NM (505) 474-5400

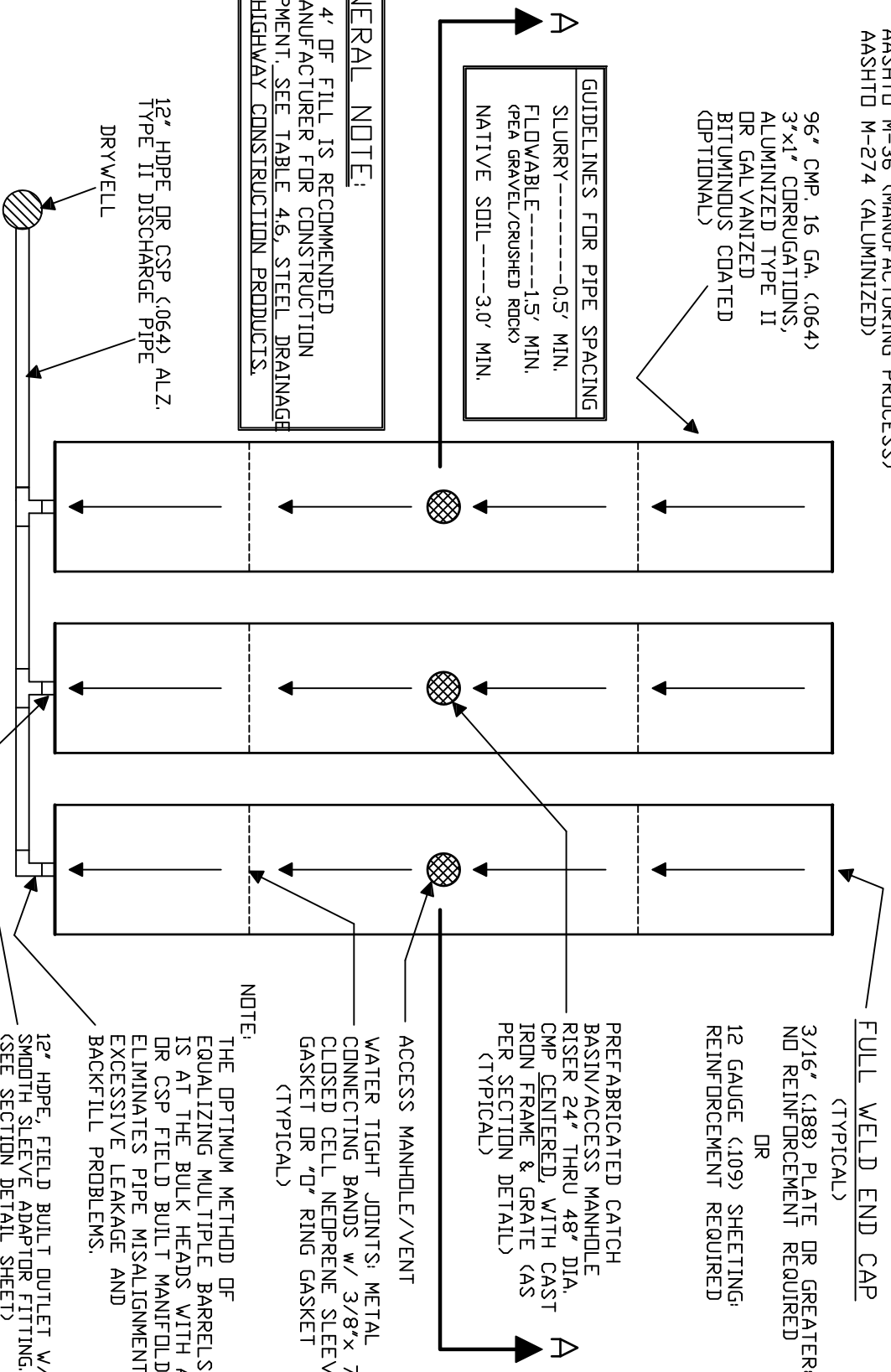
CORRUGATED PIPE DETENTION SYSTEM
(MULTIPLE BARREL)

REVISION: 06/10/2008

NOTE: TO MEET FOLLOWING SPECIFICATIONS
 AASHTO M-36 (MANUFACTURING PROCESS)
 AASHTO M-274 (ALUMINIZED)

96" CMP, 16 GA. (.064)
 3"x1" CORRUGATIONS,
 ALUMINIZED TYPE II
 OR GALVANIZED
 BITUMINOUS COATED
 (OPTIONAL)

GUIDELINES FOR PIPE SPACING
 SLURRY-----0.5' MIN.
 FLOWABLE-----1.5' MIN.
 (PEA GRAVEL/CRUSHED ROCK)
 NATIVE SOIL-----3.0' MIN.



GENERAL NOTE:

3' - 4' OF FILL IS RECOMMENDED BY MANUFACTURER FOR CONSTRUCTION EQUIPMENT. SEE TABLE 4.6, STEEL DRAINAGE AND HIGHWAY CONSTRUCTION PRODUCTS.

12" HDPE OR CSP (.064) ALZ. TYPE II DISCHARGE PIPE

DRYWELL

NOTE:

THE OPTIMUM METHOD OF EQUALIZING MULTIPLE BARRELS IS AT THE BULK HEADS WITH A HDPE OR CSP FIELD BUILT MANIFOLD. THIS ELIMINATES PIPE MISALIGNMENTS, EXCESSIVE LEAKAGE AND BACKFILL PROBLEMS.

12" HDPE, FIELD BUILT OUTLET W/ SMOOTH SLEEVE ADAPTOR FITTING. (SEE SECTION DETAIL SHEET) AASHTO M-252 & M-294 (OR)

12" CSP (.064) 2-2/3" X 1/2" CORRUGATION, ALUMINIZED TYPE II, FIELD BUILT OUTLET W/ FITTINGS. AASHTO M-274

THE INFORMATION PRESENTED SHOULD BE CHECKED BY THE PROFESSIONAL ENGINEER RESPONSIBLE FOR THE DESIGN TO VERIFY ACCURACY. ALSO, THE ASSUMPTIONS AND METHODS USED TO OBTAIN THE INFORMATION SHOULD BE REVIEWED TO MAKE CERTAIN THAT THEY ARE APPLICABLE AND SUITABLE FOR THE PROJECT DESIGNED.

N.T.S.