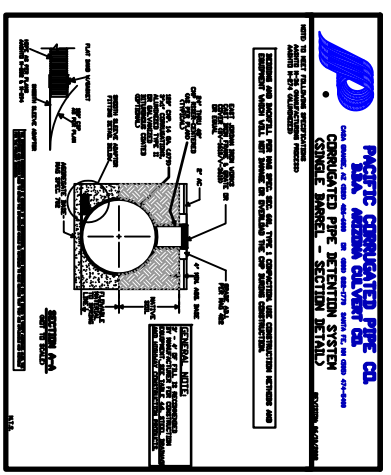
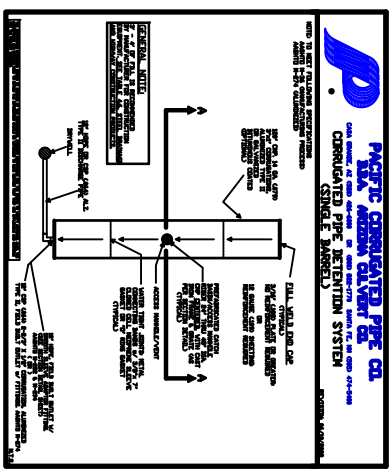


TABLE OF CONTENTS

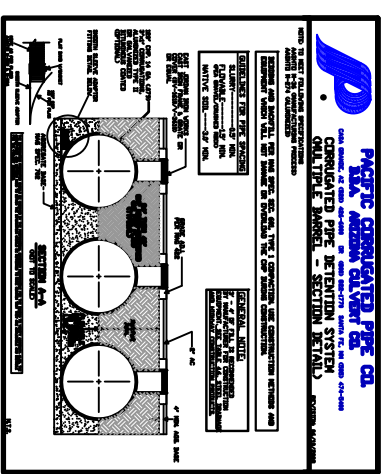
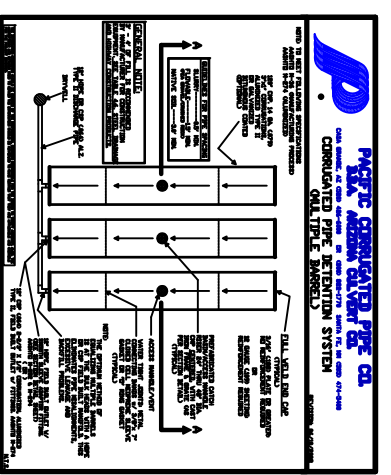
(PLEASE SELECT THE APPROPRIATE TAB FOR YOUR DRAWING NEEDS)

- 1) MODEL - TAB:
QUICK REFERENCE ON BOTH 96' & 120' DETENTION SYSTEMS, (SINGLE AND MULTIPLE RUNS)
- 2 & 3 DESIGN PROBLEMS - TAB:
QUICK REFERENCE ON BOTH MANUFACTURING AND INSTALLATION DESIGN PROBLEMS THAT ARE OCCURRING NOW.
- 4) HEAVY CONST - TABLE 4.6 - TAB:
QUICK REFERENCE ON RECOMMENDED MINIMUM FILL HEIGHT FOR HEAVY OFF-ROAD CONSTRUCTION EQUIPMENT.
(HANDBOOK OF STEEL DRAINAGE & HIGHWAY CONSTRUCTION PRODUCTS), PG. 283)
- 5) 3x1 FILL HEIGHT TABLE - TAB:
QUICK REFERENCE ON RECOMMENDED MINIMUM AND MAXIMUM FILL HEIGHT FOR H20 AND H25 TRAFFIC RATINGS FOR 3'x1' CSP. (HANDBOOK OF STEEL DRAINAGE & HIGHWAY CONSTRUCTION PRODUCTS), PG. 256)
- 6) STD PIPE FILL HEIGHT TABLE - TAB:
QUICK REFERENCE ON RECOMMENDED MINIMUM AND MAXIMUM FILL HEIGHT FOR H20 AND H25 TRAFFIC RATINGS FOR 2'-2/3'x1/2' CSP (STD) (HANDBOOK OF STEEL DRAINAGE & HIGHWAY CONSTRUCTION PRODUCTS), PG. 254)
- 7) STORAGE CAPACITY TABLE - TAB:
QUICK REFERENCE FOR PLANNING YOUR DETENTION SYSTEM. USE THE TABLE PROVIDED TO HELP CALCULATE THE LENGTH AND DIAMETER OF PIPE NEEDED FOR YOUR DETENTION SYSTEM.
- 8) DETENTION ACCESS LADDER DETAIL - TAB:
AUTO CAD DETAILS SHOWING LADDER SPECIFICATIONS & INSTALLATION METHOD RECOMMENDED BY THE MANUFACTURER.
- 9) 120 SINGLE - TAB:
AUTO CAD PLAN VIEW FOR 120', 3'x1' CORRUGATIONS, 14 GAUGE (079), ALUMINIZED TYPE II, SINGLE RUN DETENTION SYSTEM.
- 10) 120 SINGLE SECTION - TAB:
AUTO CAD SECTION DETAIL FOR 120', 3'x1' CORRUGATIONS, 14 GAUGE (079), ALUMINIZED TYPE II, SINGLE RUN DETENTION SYSTEM.
- 11) 120 MULTI - TAB:
AUTO CAD PLAN VIEW FOR 120', 3'x1' CORRUGATIONS, 14 GAUGE (079), ALUMINIZED TYPE II, MULTIPLE RUN DETENTION SYSTEM.
- 12) 120 MULTI SECTION - TAB:
AUTO CAD SECTION DETAIL FOR 120', 3'x1' CORRUGATIONS, 14 GAUGE (079), ALUMINIZED TYPE II, MULTIPLE RUN DETENTION SYSTEM.
- 13) 96 SINGLE - TAB:
AUTO CAD PLAN VIEW FOR 96', 3'x1' CORRUGATIONS, 16 GAUGE (064), ALUMINIZED TYPE II, SINGLE RUN DETENTION SYSTEM.
- 14) 96 SINGLE SECTION - TAB:
AUTO CAD SECTION DETAIL FOR 96', 3'x1' CORRUGATIONS, 16 GAUGE (064), ALUMINIZED TYPE II, SINGLE RUN DETENTION SYSTEM.
- 15) 96 MULTI - TAB:
AUTO CAD PLAN VIEW FOR 96', 3'x1' CORRUGATIONS, 16 GAUGE (064), ALUMINIZED TYPE II, MULTIPLE RUN DETENTION SYSTEM.
- 16) 96 MULTI SECTION - TAB:
AUTO CAD SECTION DETAIL FOR 96', 3'x1' CORRUGATIONS, 16 GAUGE (064), ALUMINIZED TYPE II, MULTIPLE RUN DETENTION SYSTEM.
- 17) SAMPLE ELBOWS - TAB:
AUTO CAD ELBOW DETAILS FOR 96', 3'x1' CORRUGATIONS, 16 GAUGE (064), ALUMINIZED TYPE II.

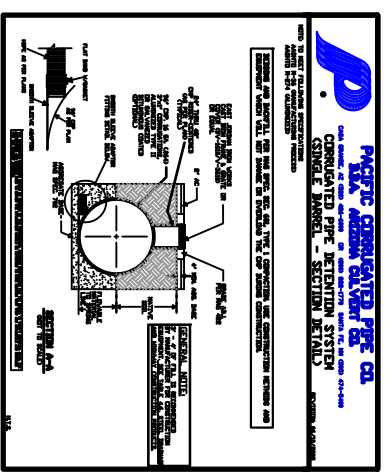
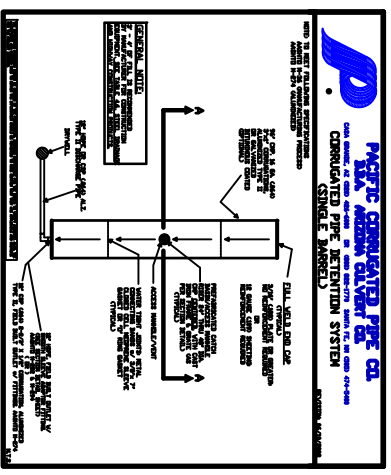
120', 14 GAUGE (079), 3X1 CORRUGATION, ALUMINIZED TYPE II
SINGLE BARREL DETAILS



120', 14 GAUGE (079), 3X1 CORRUGATION, ALUMINIZED TYPE II
MULTIPLE BARREL DETAILS



96', 16 GAUGE (064), 3X1 CORRUGATION, ALUMINIZED TYPE II
SINGLE BARREL DETAILS



96', 16 GAUGE (064), 3X1 CORRUGATION, ALUMINIZED TYPE II
MULTIPLE BARREL DETAILS

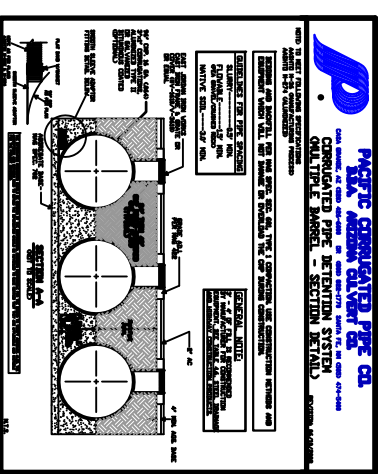
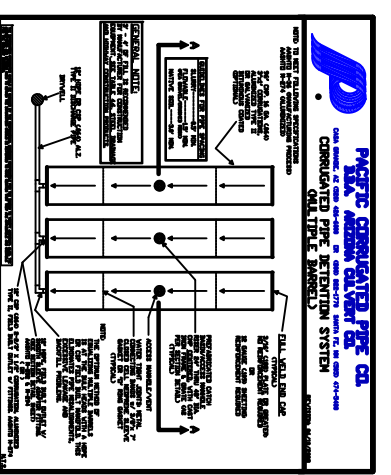


TABLE 4-3
IDENTIFY COVER LISTS FOR CORRUGATED STEEL PIPE
CORRUGATED STEEL PIPE
SINGLE RUN DETENTION SYSTEM

PIPE SIZE	CORRUGATION	COVER LIST
120	14 GAUGE	31
120	16 GAUGE	32
96	16 GAUGE	33
96	18 GAUGE	34

TABLE 4-4
CORRUGATED STEEL PIPE
STORAGE CAPACITY TABLE
ROUND PIPE

PIPE SIZE	CORRUGATION	STORAGE CAPACITY (CY)
120	14 GAUGE	31
120	16 GAUGE	32
96	16 GAUGE	33
96	18 GAUGE	34

TABLE 4-5
IDENTIFY COVER LISTS FOR CORRUGATED STEEL PIPE
CORRUGATED STEEL PIPE
MULTIPLE RUN DETENTION SYSTEM

PIPE SIZE	CORRUGATION	COVER LIST
120	14 GAUGE	31
120	16 GAUGE	32
96	16 GAUGE	33
96	18 GAUGE	34